

# MEASURE I BOND REPORT 2015



Sequoias Community  
College District



College of the Sequoias

# Measure I Bond

Thank you, voters! College of the Sequoias is pleased to share the campus improvements influenced by your support of Measure I College of the Sequoias Visalia Campus Improvement District No. 2.

On November 4, 2008, voters in Visalia, Farmersville, Exeter, Woodlake and other surrounding communities approved Measure I, a School Facilities Improvement District (SFID) bond to refurbish and upgrade facilities on the COS Visalia campus and provide for future growth.

## Measure I Bond At-A-Glance

- Fund Nursing technology and equipment for the nursing program.
- Fund up-to-date computers and technology to ensure that education is current and to improve distance learning.
- Fund security upgrades on campus including code blue emergency phones and exterior lighting.
- Fund the local match to receive state funds to modernize the Kern and Tule instructional buildings that house the social science, language arts and business/computer classrooms.
- Pay the remaining \$4.4 million debt on the John Muir Science Building.
- Fund acquisition of land for parking and expansion to meet long-term parking needs.
- Fund various upgrades and repairs ranging from roofs to plumbing.
- Fund an all-weather track, artificial turf and a new scoreboard for the COS track and field.
- Replace energy management systems with more energy-efficient technology.
- Renovate the COS Theater, and replace or repair aging equipment.
- Fund new equipment for the new Porter Field House gym and for the COS fitness center.
- Renovate Live Oak Building.

**College of the Sequoias**  
**Measure I (Visalia)**  
**Citizens' Bond Oversight Committee**  
**November 2013**

Under Proposition 39 guidelines for Citizens' Bond Oversight Committees, the Committee shall consist of a minimum of seven (7) members appointed by the Board of Trustees of the District with one member representing one (1) each of the following: Business Organizations, Senior Citizens, Taxpayers, Student Organization, College Support Organization and two (2) members of the community at-large.

**BUSINESS ORGANIZATIONS**

**TERM OF OFFICE**

Matt Seals

October 15, 2013 – October 15, 2015

**SENIOR CITIZENS**

**TERM OF OFFICE**

Myron Sheklian

October 15, 2013 – October 15, 2015

**TAXPAYERS**

**TERM OF OFFICE**

Betty Anthony

December 10, 2013 – November 19, 2015

**STUDENT ORGANIZATION**

**TERM OF OFFICE**

Member of Student Senate

October 15, 2013 – June 30, 2016

**COLLEGE SUPPORT ORGANIZATION**

**TERM OF OFFICE**

Josh McDonnell

July 1, 2012 – June 30, 2016

**AT-LARGE**

**TERM OF OFFICE**

Tom Giampietro

October 15, 2013 – October 15, 2015

Juan Lopez

October 15, 2013 – October 15, 2015





## Parking & Expansion







After

## Landscaping



After





NORTH



SOUTH

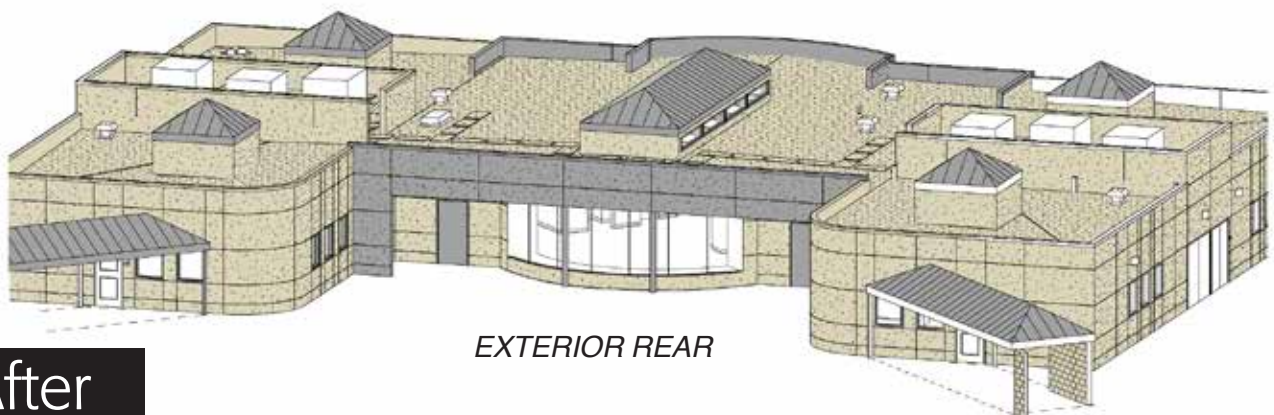
EXTERIOR ELEVATIONS

After

## Live Oak Building Renovation



EXTERIOR FRONT



EXTERIOR REAR

After



After

## Energy Management & Maintenance



After





Before

## Kern Building 719



After





Before

## Kern Building 733



After



Tule Building 500



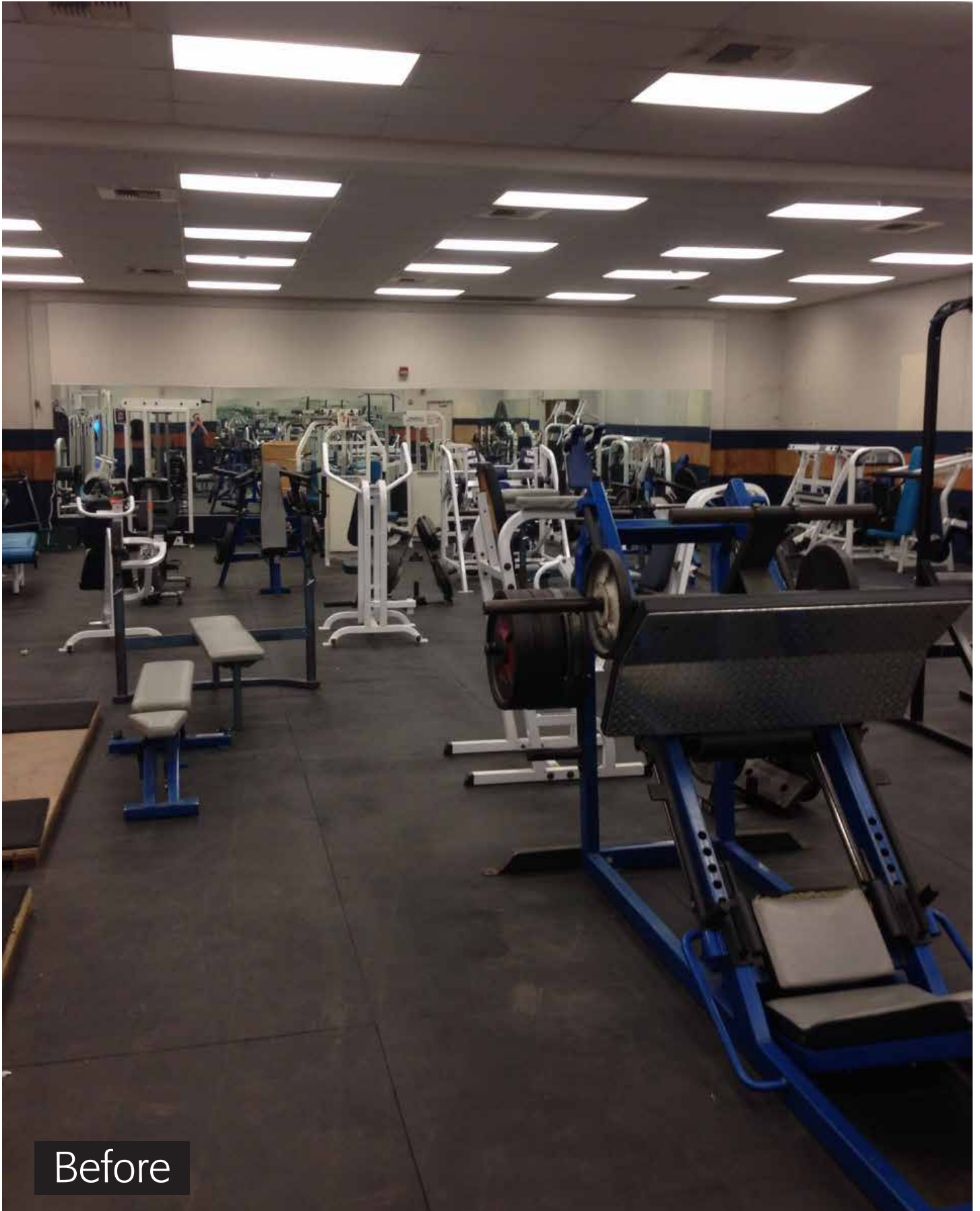




Tule Building 509



# Athletics



Before



# Athletics



After



## Athletics







Before

Safety



After



Safety/Energy



Before



Servers & Infrastructure



After

## Servers & Infrastructure



After





After

## Computer Lab Classrooms



After



After

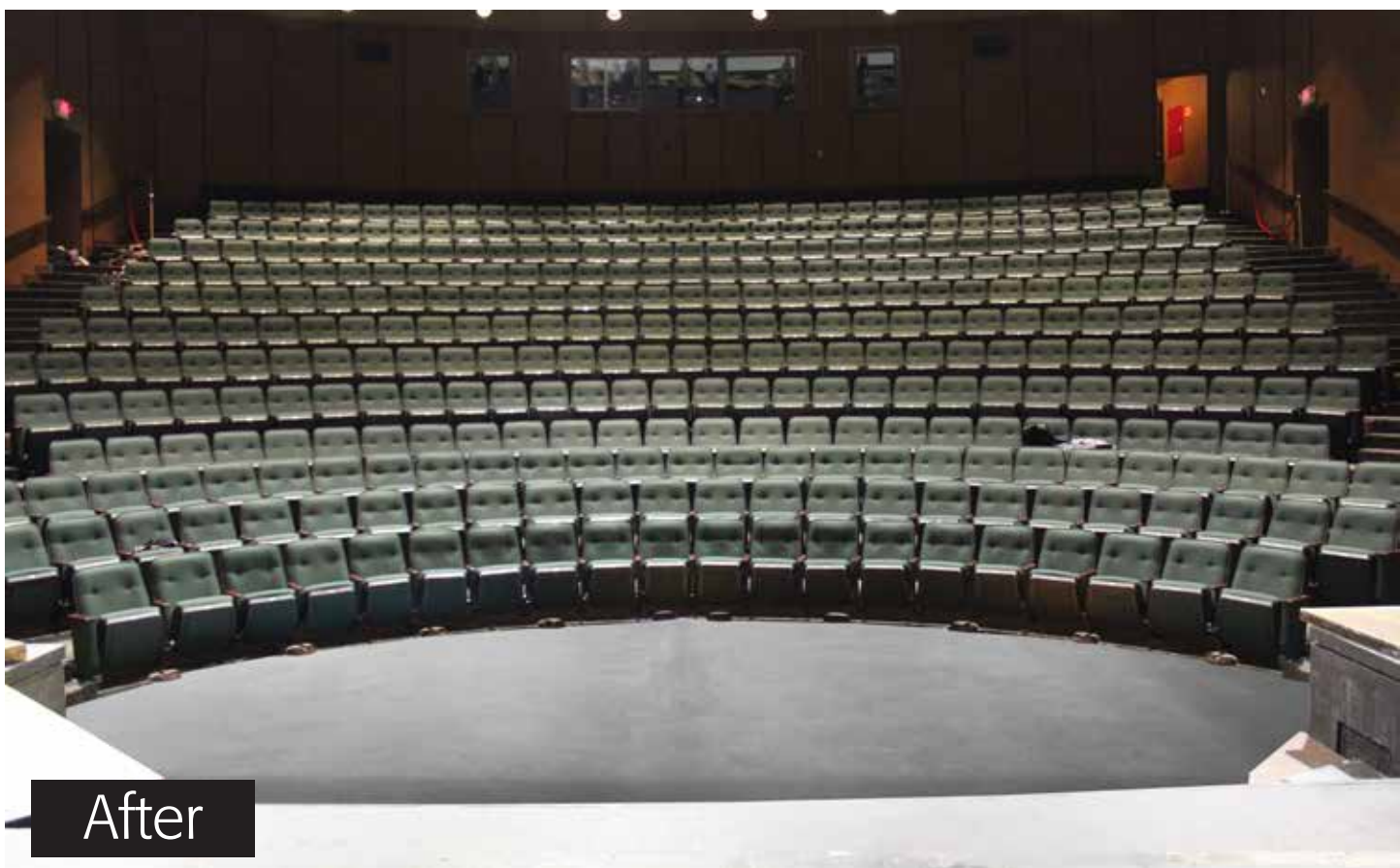
Computer Lab Classrooms





Before

## Theater Seating

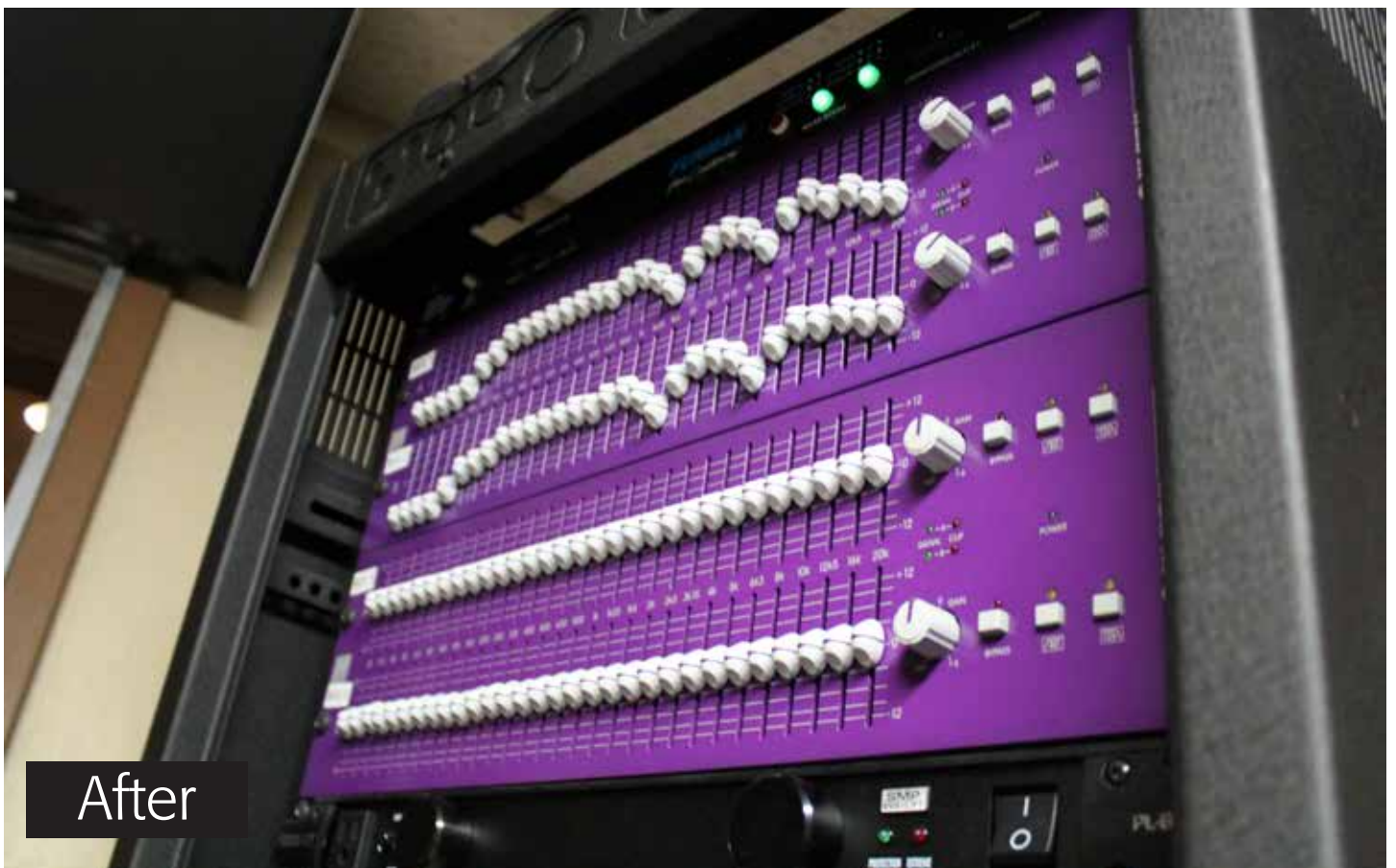


After



Before

## Theater Lighting



After





Theater Lighting